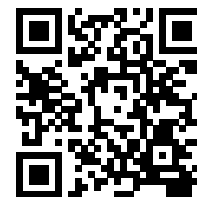


Productivity Series Spectrophotometer

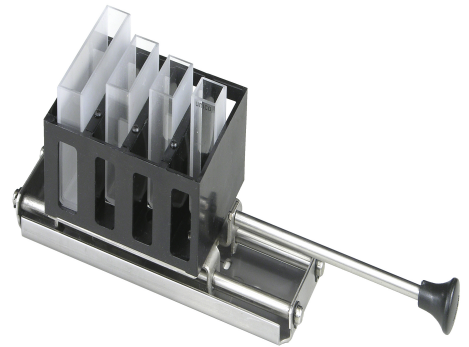
Model: S-1205

- UNICO 1205 SERIES PROGRAMMABLE SPECTROPHOTOMETER
- DIGITAL INTERFACE WITH INTERNAL MEMORY AND AUTO SYSTEM CHECK
- 325-1000 NM WAVELENGTH RANGE
- 5NM SPECTRAL BANDWIDTH
- 4 PLACE SAMPLE HOLDER FOR 10 MM SQUARE CUVETTES
- USB PORT FOR OPTIONAL SOFTWARE
- INCLUDED ARE 2PCS OF 10MM SQUARE GLASS CUVETTES; DUST COVER; USER MANUAL
- VOLTAGE PRESET AT 110V



UNICO S1205 is a new, advanced design, expanding on the capabilities of its analog cousin, the S1200. The S1205 is an all digital, fully programmable spectrophotometer with 5nm accuracy and push button, digital key pad wavelength change. This versatile instrument features a wide sample compartment and can accept cuvettes up to 50 mm path-length and a variety of accessories. The wide path length and optional accessories make this unit ideal for water testing, environmental and petroleum industry testing.

Turn your S1205 into a very cost effective scanning spectrophotometer with the optional Windows based software package. The S1205 is capable of storing and recalling up to 200 standard curves and 500 test data results in its integrated memory. The S1205



ADDITIONAL INFORMATION

<p>ACCESSORIES</p>	<p>Software</p> <p>S-1200-401 Unico S-1200 Spectrophotometer Software. Win 7 Or Win 10 Required. Functions include Standard Curve, Abs./%T/Conc. and Abs. vs. Time. includes USB Cable.</p> <p>S-1205-401 Unico S-1205 Spectrophotometer Software. Win 7 Or Win 10 Required. Functions include Standard Curve, Abs/%T/Conc., and Kinetics and Scanning. includes USB Cable.</p> <p>Accessories</p> <p>S-1200-101 Test Tube V-Type Cell Holder with Base for 8~25 Mm Diameter Test Tubes for S-1200 Series</p> <p>S-1200-102 Single Square Cuvette Holder with Base for 10 Mm Cuvettes for S-1200 Series</p> <p>S-1200-103 4-Position Cell Holder for 10 Mm Square Cuvettes (Standard in Model 1201) for S-1200 Series</p> <p>S-1200-104 Long Path 4-Cell Holder for Up To 50 Mm Rectangular Cuvettes for S-1200 Series</p> <p>S-1200-105 Water-Jacketed Cell Holder W/Base and Panel for Temperature Controlled Application for S-1200 Series</p> <p>S-1200-106 Universal Base for V-Type Holder, Single Cell Holder and Water-Jacketed Holder for S-1200 Series</p> <p>S-1200-111 Black Block To Set 0%T</p> <p>S-1200-512 Dust Cover for S-1200 Spectrophotometer</p> <p>S-1205-515 Halogen Bulb with Vertical Filament G4 12v20w for S-1205</p> <p>S-1200-505 Halogen Bulb, Package Of 1 (6v/10w, G4 Pin)</p>
<p>SPECIFICATION</p>	<p>Spectral Bandwidth 5 nm</p> <p>Monochromator Single Beam, Grating System 1200 lines/mm</p> <p>Wavelength Range 325-1000 nm</p> <p>Wavelength Accuracy</p>
<p>SIZE AND WEIGHT</p>	<p>Size 16 x 12 x 8 inch</p>



	(406 x 305 x 203mm)
Shipping Size	19.5 x 16.1 x 11.3 inch
	(496 x 410 x 286 mm)
Weight	18 lbs (8.2 kg)
Shipping Weight	21 lbs (9.5 kg)

