

B6-8187 HDMI VIDEO SYSTEM ASSEMBLY INSTRUCTIONS

The B6-8187 video/image capture package designed to be mounted on UNICO microscopes

The B6-8187 HDMI package includes the following components

1. HDMI Camera, 1080P resolution.
2. AC/DC power supply, rated 12V /1A output and 6' cord
3. SD card, currently 8GB capacity subject to change.
4. HDMI cord.
5. Wireless USB 2.0 mouse. 1 AA battery included.
6. SD card reader with USB 2.0 interface.
7. C-mount adapter – can vary depending on specific microscope. Stereo microscope adapter pictured in this guide.
8. Allen key for adjusting camera position.

Please note that SD card, mouse, HDMI cord and reader can look different as technology changes all the time. If any of the components are missing please contact UNICO customer service 732-274-1155.

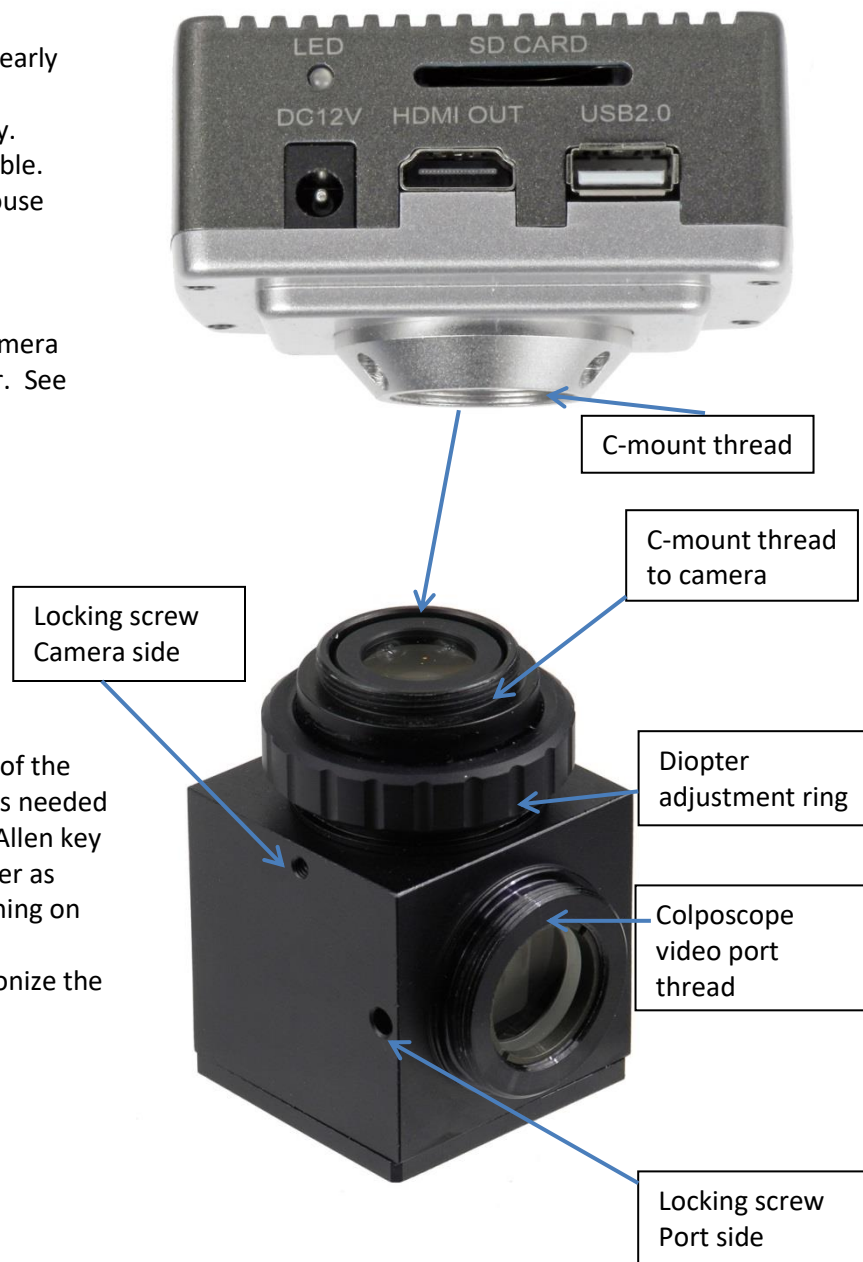
COMPONENTS DETAILS

1. HDMI camera features several ports, all clearly marked as pictured
 - a) **DC12V** port to insert the power supply.
 - b) **HDMI OUT** port to insert the HDMI cable.
 - c) **USB 2.0** port to insert the wireless mouse receiver.
 - d) **SD CARD** port to insert the SD card.
 - e) **LED** - power on indicator.
 - f) The C-mount thread in front of the camera lenses to connect the L-shape adapter. See details below.

2. L-Shape C-mount camera adapter (PN#CS-8020L)

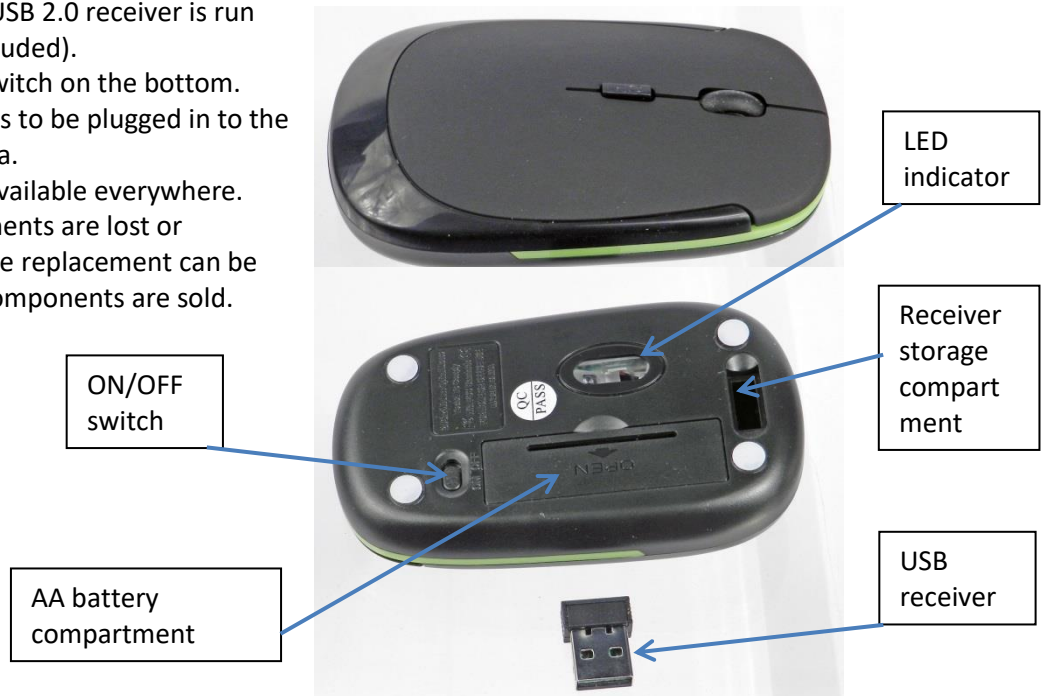
The adapter is designed to connect to the video port on the back of the colposcope head and the camera c-mount thread. Each thread side is locked in place by the pair of the locking screws as pictured. If any adjustment is needed loosen up the screws on both sides using the Allen key included with the package. Position the adapter as desired and lock both screws gradually tightening on both sides.

The diopter adjustment ring is used to synchronize the focusing of the colposcope with the camera.



3. Wireless Mouse.

This wireless mouse with USB 2.0 receiver is run on a single AA battery (included). Please note the ON/OFF switch on the bottom. The wireless receiver needs to be plugged in to the USB 2.0 port on the camera. This is a standard mouse available everywhere. If the mouse or its components are lost or misplaced or damaged - the replacement can be purchased anywhere PC components are sold.



4. SD card USB adapter.

Included with the package to facilitate image Transfer from SD card to computer via USB port/ Support Windows XP/Vista/Win7 or Mac OS9.X and Up. Please note the shape and color of the adapter may vary over time subject to availability on the market. This is a standard adapter available everywhere PC components are sold.



5. SD card. Currently 8GB subject to market availability and costs. Standard component available everywhere PC components are sold.

6. HDMI cable. 12ft long to accommodate variety of situations. Standard component available everywhere PC components are sold.

INSTALLATION.

1. Remove the cover from the colposcope head video port and store it in a safe place.
2. Connect the L-Shape adapter. The Colposcope video port thread has very fine threading. **Do not force it – damage will occur!!** **Do not overtighten!!** The adapter should be installed with the camera port facing down. If an adjustment is necessary use the included Allen key to loosen up Port side locking screws on both sides. Position adapter and lock the screws on both sides.



3. Connect the camera to the c-mount thread of the adapter.
This is again a very fine thread. Please take your time aligning the camera to the adapter.

Do not force it – damage will occur!! Threads are sensitive!!

Do not overtighten!!

The camera should be positioned with the ports facing the front of the colposcopes so all cables are under the head and not in the way. Use the locking screws on the camera side and the Allen key included to make adjustments if necessary. We recommend doing all adjustments prior to connecting all cables.



4. Insert the SD card in to the port. Insert wireless mouse receiver. Insert HDMI cable. Connect the power supply
You may find it easier to turn the camera so the ports facing you while connecting the components.
Return the camera to the working position when ready. Please note that this positioning is only a suggestion.
Each physician may find more convenient to have the camera turn sideways or with the ports facing the back of the colposcope.



5. Connect the HDMI cable to the HDMI port of the monitor. Plug the camera power supply into the power outlet – the power on LED indicator will light up. Turn on the monitor. You should be able to see the feed from the camera on the screen. This completes the assembly of the HDMI video system.